



MONTHLY MEMBERSHIP PROGRESS REPORT

Results as of: 3/31/2015

Multiple District 26

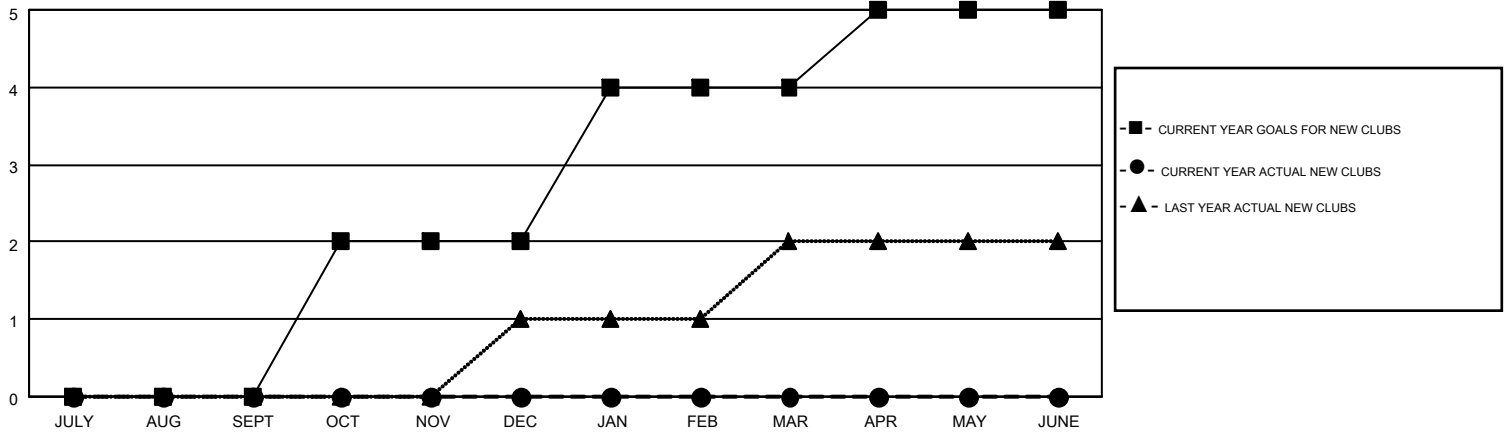
LOCATION: MISSOURI

GMT: HAL GRIFFIN

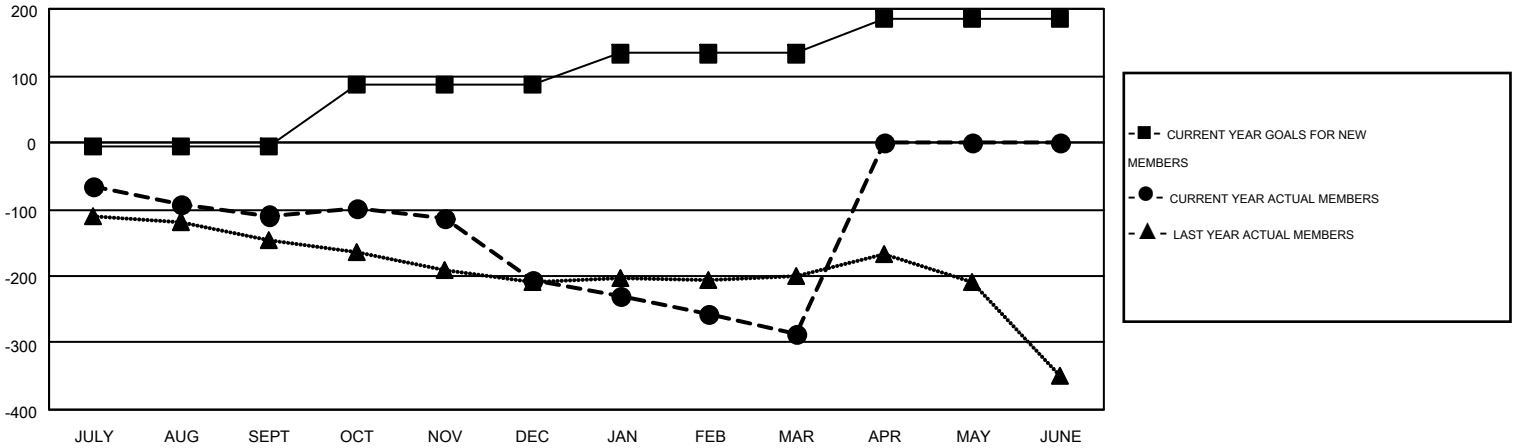
GMT CA 1

| Clubs | | | | | Members | | | | |
|-----------------------|---------------|-----------|---------------|---------------|-----------------------|-----------------|-------------------------------|-----------------|---------------|
| RESULTS FOR 2014-2015 | | | | | RESULTS FOR 2014-2015 | | | | |
| QUARTER | NEW CLUB GOAL | NEW CLUBS | DROPPED CLUBS | NET GAIN/LOSS | QUARTER | NEW MEMBER GOAL | CHARTER AND NEW MEMBERS ADDED | DROPPED MEMBERS | NET GAIN/LOSS |
| JULY/AUG/SEPT | 0 | 0 | 2 | -2 | JULY/AUG/SEPT | -7 | 219 | 328 | -109 |
| OCT/NOV/DEC | 2 | 0 | 5 | -5 | OCT/NOV/DEC | 94 | 183 | 279 | -96 |
| JAN/FEB/MAR | 2 | 0 | 0 | 0 | JAN/FEB/MAR | 46 | 184 | 266 | -82 |
| APR/MAY/JUNE | 1 | 0 | 0 | 0 | APR/MAY/JUNE | 53 | 0 | 0 | 0 |

GOALS AND ACTUAL NEW CLUBS CUMULATIVE



GOALS AND ACTUAL MEMBERS CUMULATIVE



| | | | |
|------------------------|--|---|----------------|
| DROPPED CLUBS: 7 | 200 CLUBS OF 360 ADDED 1 OR MORE NEW MEMBERS | <u>GENDER DISTRIBUTION</u> | |
| <u>DROPPED MEMBERS</u> | | MALE | 7,079 (75.57%) |
| DECEASED | 117 | FEMALE | 2,289 (24.43%) |
| CLUB CANCELLED | 37 | CLICK HERE FOR HEALTH ASSESSMENT DATA | |
| OTHER | 719 | FAMILY UNIT MEMBERS | 1,570 |
| TOTAL | 873 | HEAD OF HOUSEHOLD | 770 |
| | | NON-HEAD OF HOUSEHOLD | 800 |